



2323 West Oxford
Englewood, CO 80110

www.SouthwestCP.com

Metro Denver & Colorado Springs
Northern Colorado & Wyoming

TOLL FREE 888-781-7867

303-781-7867
970-330-1290

FAX 303-781-9446

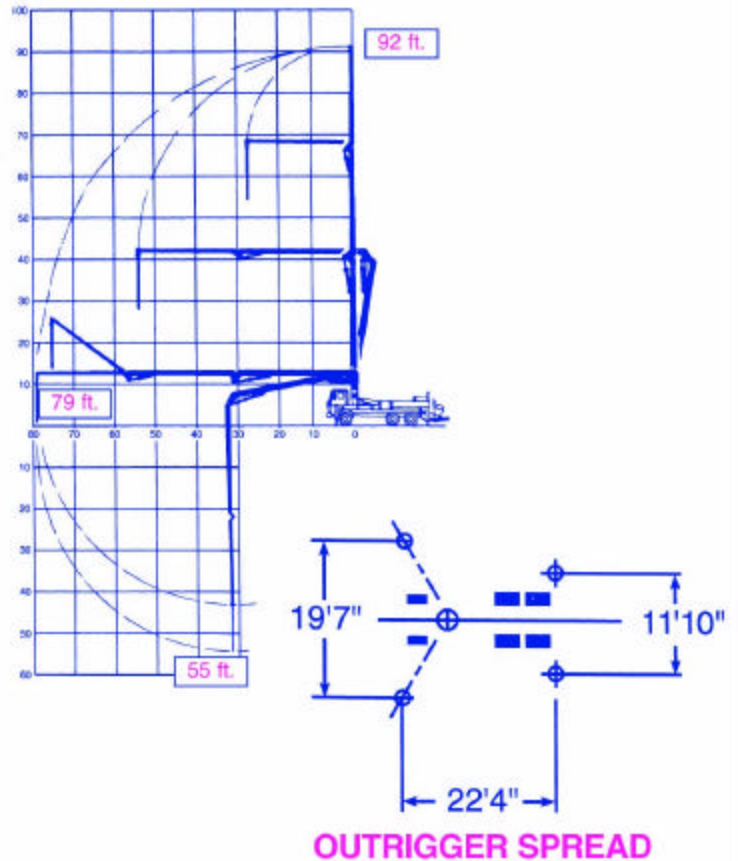
KVM 28 Concrete Pump Truck Mounted Concrete Pump with 3-Section Placing Boom

The practical reach of the 28-meter boom is available with X-style outrigger for fast and convenient set-up. The Boom features patented roll and fold boom design with Three-Section overhead Roll & Fold that allows for maximum boom utilization.

Boom Specifications	U.S.	Metric
Pipeline Diameter	5"	125 mm
Vertical reach	92'	28 m
Reach From Slewing Axis	79'	24 m
Net Horizontal reach	73'	22.2 m
Unfolding Height	28' - 2"	8.5 m

Section Lengths:	U.S.	Metric
First Section	28' - 3"	8.6 m
Second Section	26' - 7"	8.1 m
Third Section	23' - 9"	7.2 m
Slewing Range	370 deg.	370 deg.
End hose Length	12' - 5"	4 m

Specifications are subject to change without prior notice.



Some of Southwest Concrete Pumping's Fleet:

